

1. ALL DIMENSIONS ARE IN FEET AND DECIMALS THEREOF.
 2. ALL DIMENSIONS ARE TO CENTERLINE UNLESS OTHERWISE NOTED.
 3. ALL DIMENSIONS ARE TO FACE UNLESS OTHERWISE NOTED.
 4. ALL DIMENSIONS ARE TO CENTERLINE UNLESS OTHERWISE NOTED.
 5. ALL DIMENSIONS ARE TO FACE UNLESS OTHERWISE NOTED.
 6. ALL DIMENSIONS ARE TO CENTERLINE UNLESS OTHERWISE NOTED.
 7. ALL DIMENSIONS ARE TO FACE UNLESS OTHERWISE NOTED.
 8. ALL DIMENSIONS ARE TO CENTERLINE UNLESS OTHERWISE NOTED.
 9. ALL DIMENSIONS ARE TO FACE UNLESS OTHERWISE NOTED.
 10. ALL DIMENSIONS ARE TO CENTERLINE UNLESS OTHERWISE NOTED.
 11. ALL DIMENSIONS ARE TO FACE UNLESS OTHERWISE NOTED.
 12. ALL DIMENSIONS ARE TO CENTERLINE UNLESS OTHERWISE NOTED.
 13. ALL DIMENSIONS ARE TO FACE UNLESS OTHERWISE NOTED.
 14. ALL DIMENSIONS ARE TO CENTERLINE UNLESS OTHERWISE NOTED.
 15. ALL DIMENSIONS ARE TO FACE UNLESS OTHERWISE NOTED.
 16. ALL DIMENSIONS ARE TO CENTERLINE UNLESS OTHERWISE NOTED.
 17. ALL DIMENSIONS ARE TO FACE UNLESS OTHERWISE NOTED.
 18. ALL DIMENSIONS ARE TO CENTERLINE UNLESS OTHERWISE NOTED.
 19. ALL DIMENSIONS ARE TO FACE UNLESS OTHERWISE NOTED.
 20. ALL DIMENSIONS ARE TO CENTERLINE UNLESS OTHERWISE NOTED.
 21. ALL DIMENSIONS ARE TO FACE UNLESS OTHERWISE NOTED.
 22. ALL DIMENSIONS ARE TO CENTERLINE UNLESS OTHERWISE NOTED.
 23. ALL DIMENSIONS ARE TO FACE UNLESS OTHERWISE NOTED.
 24. ALL DIMENSIONS ARE TO CENTERLINE UNLESS OTHERWISE NOTED.
 25. ALL DIMENSIONS ARE TO FACE UNLESS OTHERWISE NOTED.
 26. ALL DIMENSIONS ARE TO CENTERLINE UNLESS OTHERWISE NOTED.
 27. ALL DIMENSIONS ARE TO FACE UNLESS OTHERWISE NOTED.
 28. ALL DIMENSIONS ARE TO CENTERLINE UNLESS OTHERWISE NOTED.
 29. ALL DIMENSIONS ARE TO FACE UNLESS OTHERWISE NOTED.
 30. ALL DIMENSIONS ARE TO CENTERLINE UNLESS OTHERWISE NOTED.
 31. ALL DIMENSIONS ARE TO FACE UNLESS OTHERWISE NOTED.
 32. ALL DIMENSIONS ARE TO CENTERLINE UNLESS OTHERWISE NOTED.
 33. ALL DIMENSIONS ARE TO FACE UNLESS OTHERWISE NOTED.
 34. ALL DIMENSIONS ARE TO CENTERLINE UNLESS OTHERWISE NOTED.
 35. ALL DIMENSIONS ARE TO FACE UNLESS OTHERWISE NOTED.
 36. ALL DIMENSIONS ARE TO CENTERLINE UNLESS OTHERWISE NOTED.
 37. ALL DIMENSIONS ARE TO FACE UNLESS OTHERWISE NOTED.
 38. ALL DIMENSIONS ARE TO CENTERLINE UNLESS OTHERWISE NOTED.
 39. ALL DIMENSIONS ARE TO FACE UNLESS OTHERWISE NOTED.
 40. ALL DIMENSIONS ARE TO CENTERLINE UNLESS OTHERWISE NOTED.
 41. ALL DIMENSIONS ARE TO FACE UNLESS OTHERWISE NOTED.
 42. ALL DIMENSIONS ARE TO CENTERLINE UNLESS OTHERWISE NOTED.
 43. ALL DIMENSIONS ARE TO FACE UNLESS OTHERWISE NOTED.
 44. ALL DIMENSIONS ARE TO CENTERLINE UNLESS OTHERWISE NOTED.
 45. ALL DIMENSIONS ARE TO FACE UNLESS OTHERWISE NOTED.
 46. ALL DIMENSIONS ARE TO CENTERLINE UNLESS OTHERWISE NOTED.
 47. ALL DIMENSIONS ARE TO FACE UNLESS OTHERWISE NOTED.
 48. ALL DIMENSIONS ARE TO CENTERLINE UNLESS OTHERWISE NOTED.
 49. ALL DIMENSIONS ARE TO FACE UNLESS OTHERWISE NOTED.
 50. ALL DIMENSIONS ARE TO CENTERLINE UNLESS OTHERWISE NOTED.
 51. ALL DIMENSIONS ARE TO FACE UNLESS OTHERWISE NOTED.
 52. ALL DIMENSIONS ARE TO CENTERLINE UNLESS OTHERWISE NOTED.
 53. ALL DIMENSIONS ARE TO FACE UNLESS OTHERWISE NOTED.
 54. ALL DIMENSIONS ARE TO CENTERLINE UNLESS OTHERWISE NOTED.
 55. ALL DIMENSIONS ARE TO FACE UNLESS OTHERWISE NOTED.
 56. ALL DIMENSIONS ARE TO CENTERLINE UNLESS OTHERWISE NOTED.
 57. ALL DIMENSIONS ARE TO FACE UNLESS OTHERWISE NOTED.
 58. ALL DIMENSIONS ARE TO CENTERLINE UNLESS OTHERWISE NOTED.
 59. ALL DIMENSIONS ARE TO FACE UNLESS OTHERWISE NOTED.
 60. ALL DIMENSIONS ARE TO CENTERLINE UNLESS OTHERWISE NOTED.
 61. ALL DIMENSIONS ARE TO FACE UNLESS OTHERWISE NOTED.
 62. ALL DIMENSIONS ARE TO CENTERLINE UNLESS OTHERWISE NOTED.
 63. ALL DIMENSIONS ARE TO FACE UNLESS OTHERWISE NOTED.
 64. ALL DIMENSIONS ARE TO CENTERLINE UNLESS OTHERWISE NOTED.
 65. ALL DIMENSIONS ARE TO FACE UNLESS OTHERWISE NOTED.
 66. ALL DIMENSIONS ARE TO CENTERLINE UNLESS OTHERWISE NOTED.
 67. ALL DIMENSIONS ARE TO FACE UNLESS OTHERWISE NOTED.
 68. ALL DIMENSIONS ARE TO CENTERLINE UNLESS OTHERWISE NOTED.
 69. ALL DIMENSIONS ARE TO FACE UNLESS OTHERWISE NOTED.
 70. ALL DIMENSIONS ARE TO CENTERLINE UNLESS OTHERWISE NOTED.
 71. ALL DIMENSIONS ARE TO FACE UNLESS OTHERWISE NOTED.
 72. ALL DIMENSIONS ARE TO CENTERLINE UNLESS OTHERWISE NOTED.
 73. ALL DIMENSIONS ARE TO FACE UNLESS OTHERWISE NOTED.
 74. ALL DIMENSIONS ARE TO CENTERLINE UNLESS OTHERWISE NOTED.
 75. ALL DIMENSIONS ARE TO FACE UNLESS OTHERWISE NOTED.
 76. ALL DIMENSIONS ARE TO CENTERLINE UNLESS OTHERWISE NOTED.
 77. ALL DIMENSIONS ARE TO FACE UNLESS OTHERWISE NOTED.
 78. ALL DIMENSIONS ARE TO CENTERLINE UNLESS OTHERWISE NOTED.
 79. ALL DIMENSIONS ARE TO FACE UNLESS OTHERWISE NOTED.
 80. ALL DIMENSIONS ARE TO CENTERLINE UNLESS OTHERWISE NOTED.
 81. ALL DIMENSIONS ARE TO FACE UNLESS OTHERWISE NOTED.
 82. ALL DIMENSIONS ARE TO CENTERLINE UNLESS OTHERWISE NOTED.
 83. ALL DIMENSIONS ARE TO FACE UNLESS OTHERWISE NOTED.
 84. ALL DIMENSIONS ARE TO CENTERLINE UNLESS OTHERWISE NOTED.
 85. ALL DIMENSIONS ARE TO FACE UNLESS OTHERWISE NOTED.
 86. ALL DIMENSIONS ARE TO CENTERLINE UNLESS OTHERWISE NOTED.
 87. ALL DIMENSIONS ARE TO FACE UNLESS OTHERWISE NOTED.
 88. ALL DIMENSIONS ARE TO CENTERLINE UNLESS OTHERWISE NOTED.
 89. ALL DIMENSIONS ARE TO FACE UNLESS OTHERWISE NOTED.
 90. ALL DIMENSIONS ARE TO CENTERLINE UNLESS OTHERWISE NOTED.
 91. ALL DIMENSIONS ARE TO FACE UNLESS OTHERWISE NOTED.
 92. ALL DIMENSIONS ARE TO CENTERLINE UNLESS OTHERWISE NOTED.
 93. ALL DIMENSIONS ARE TO FACE UNLESS OTHERWISE NOTED.
 94. ALL DIMENSIONS ARE TO CENTERLINE UNLESS OTHERWISE NOTED.
 95. ALL DIMENSIONS ARE TO FACE UNLESS OTHERWISE NOTED.
 96. ALL DIMENSIONS ARE TO CENTERLINE UNLESS OTHERWISE NOTED.
 97. ALL DIMENSIONS ARE TO FACE UNLESS OTHERWISE NOTED.
 98. ALL DIMENSIONS ARE TO CENTERLINE UNLESS OTHERWISE NOTED.
 99. ALL DIMENSIONS ARE TO FACE UNLESS OTHERWISE NOTED.
 100. ALL DIMENSIONS ARE TO CENTERLINE UNLESS OTHERWISE NOTED.

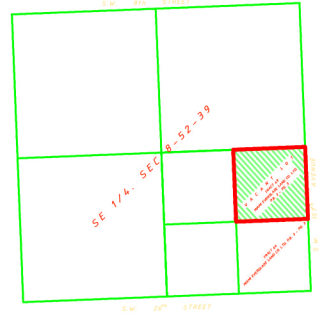
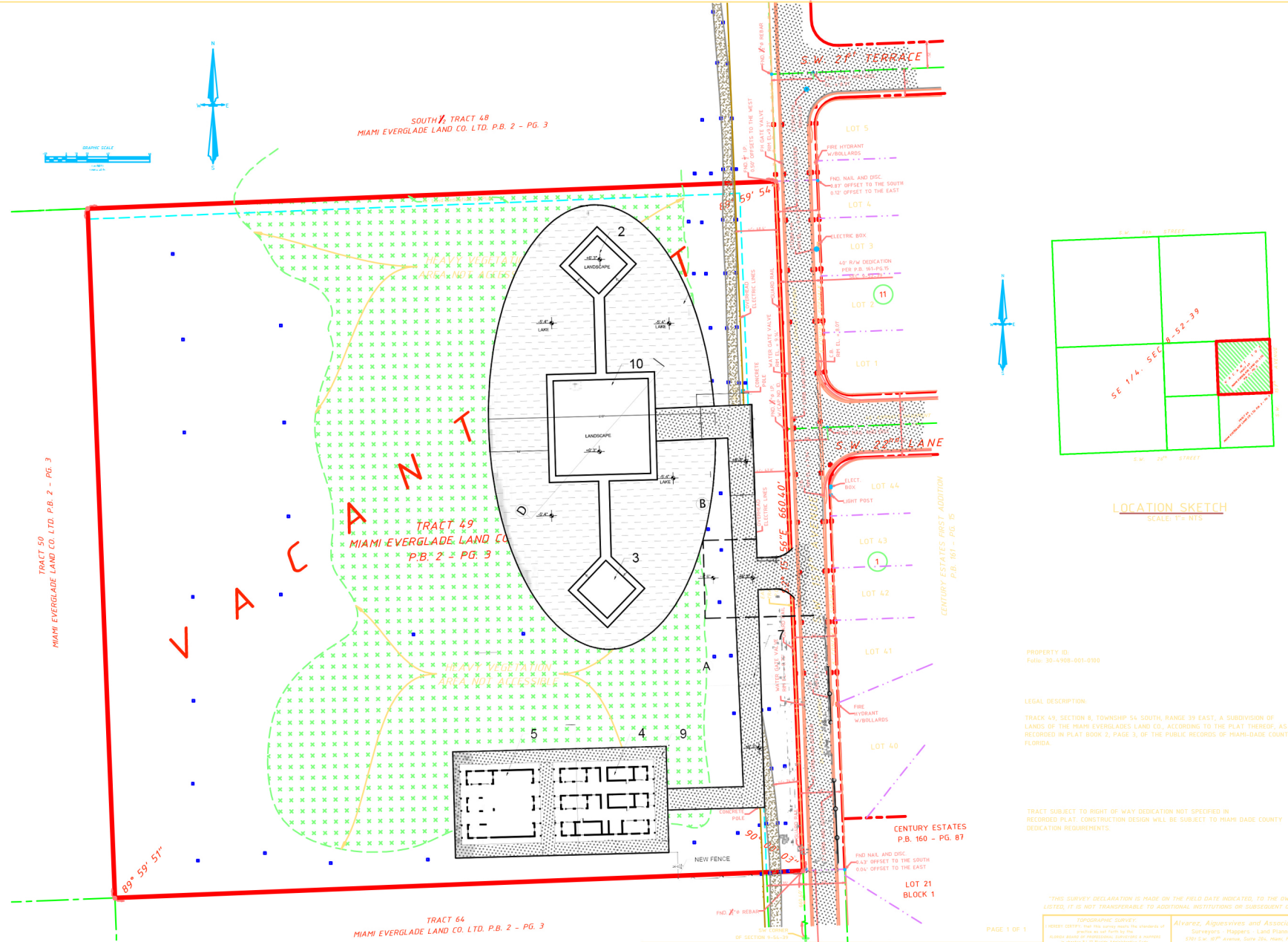


SOUTH 1/4 TRACT 48
MIAMI EVERGLADE LAND CO. LTD. P.B. 2 - PG. 3

TRACT 50
MIAMI EVERGLADE LAND CO. LTD. P.B. 2 - PG. 3

TRACT 49
MIAMI EVERGLADE LAND CO. LTD. P.B. 2 - PG. 3

TRACT 44
MIAMI EVERGLADE LAND CO. LTD. P.B. 2 - PG. 3



LOCATION SKETCH
SCALE: 1" = NTS

PROPERTY ID:
Folio: 30-4908-001-000

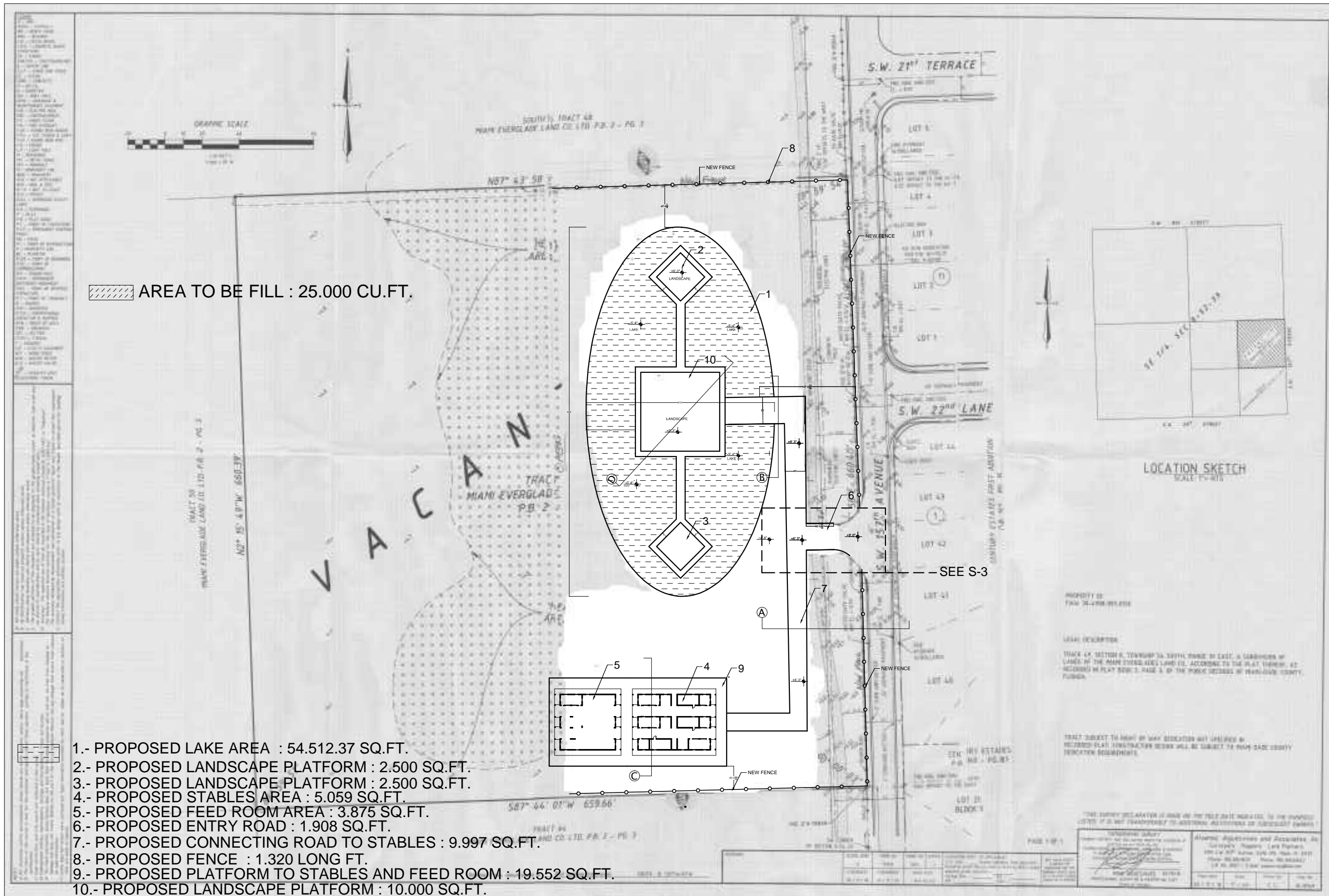
LEGAL DESCRIPTION:
TRACT 49, SECTION 8, TOWNSHIP 54 SOUTH RANGE 39 EAST, A SUBDIVISION OF LANDS OF THE MIAMI EVERGLADES LAND CO., ACCORDING TO THE PLAT THEREOF, AS RECORDED IN PLAT BOOK 2, PAGE 3, OF THE PUBLIC RECORDS OF MIAMI-DADE COUNTY, FLORIDA.

TRACT SUBJECT TO RIGHT OF WAY DEDICATION NOT SPECIFIED IN RECORDED PLAT. CONSTRUCTION DESIGN WILL BE SUBJECT TO MIAMI-DADE COUNTY DEDICATION REQUIREMENTS.

"THIS SURVEY RECLAMATION IS MADE ON THE FIELD DATA INDICATED, TO THE OWNERS' INTEREST, IT IS NOT TRANSFERABLE TO ADDITIONAL INSTITUTIONS OR SUBSEQUENT OWNERS."

TOPOGRAPHIC SURVEY		RENE AGUIRRE/ROSA	
DATE OF SURVEY	12/15/2023	DATE OF SURVEY	12/15/2023
BY	RENE AGUIRRE/ROSA	BY	RENE AGUIRRE/ROSA
SCALE	1" = 40'	SCALE	1" = 40'
PROJECT	TRACT 49, SECTION 8, TOWNSHIP 54 SOUTH RANGE 39 EAST	PROJECT	TRACT 49, SECTION 8, TOWNSHIP 54 SOUTH RANGE 39 EAST
OWNER	MIAMI EVERGLADES LAND CO.	OWNER	MIAMI EVERGLADES LAND CO.
PREPARED BY	RENE AGUIRRE/ROSA	PREPARED BY	RENE AGUIRRE/ROSA
CHECKED BY	RENE AGUIRRE/ROSA	CHECKED BY	RENE AGUIRRE/ROSA
DATE	12/15/2023	DATE	12/15/2023

SECTION	TOWNSHIP	RANGE	DATE	SCALE	PROJECT	OWNER	PREPARED BY	CHECKED BY	DATE
P08-01-02	P08-01-02	R08-02-02	12/15/2023	1" = 40'	TRACT 49, SECTION 8, TOWNSHIP 54 SOUTH RANGE 39 EAST	MIAMI EVERGLADES LAND CO.	RENE AGUIRRE/ROSA	RENE AGUIRRE/ROSA	12/15/2023



AREA TO BE FILL : 25.000 CU.FT.

PERMIT SET

1514174

EDWARD A. LANDERS, P.E., hereby certifies that the above information is true and correct to the best of his knowledge and belief. THESE DRAWINGS ARE TO BE USED FOR THE PROJECT STATED ONLY AND SHALL NOT BE USED OR REPRODUCED FOR ANY OTHER PURPOSE WITHOUT THE EXPRESSED WRITTEN CONSENT OF THE ENGINEER. VERIFY ALL DIMENSIONS AND SHALL NOT RELY ON DIMENSIONS SHOWN UNLESS THE DIMENSIONS ARE SPECIFICALLY NOTED OTHERWISE PRIOR TO COMMENCING WORK.

APPROVED BY	DATE

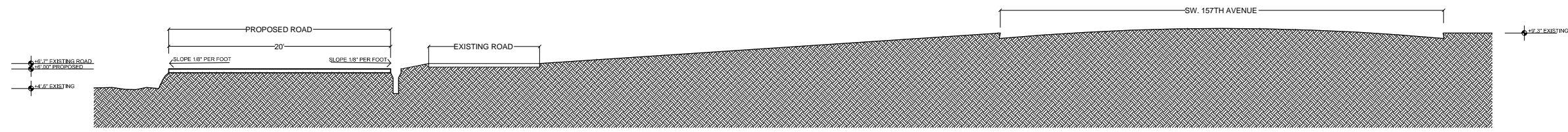
- 1.- PROPOSED LAKE AREA : 54.512.37 SQ.FT.
- 2.- PROPOSED LANDSCAPE PLATFORM : 2.500 SQ.FT.
- 3.- PROPOSED LANDSCAPE PLATFORM : 2.500 SQ.FT.
- 4.- PROPOSED STABLES AREA : 5.059 SQ.FT.
- 5.- PROPOSED FEED ROOM AREA : 3.875 SQ.FT.
- 6.- PROPOSED ENTRY ROAD : 1.908 SQ.FT.
- 7.- PROPOSED CONNECTING ROAD TO STABLES : 9.997 SQ.FT.
- 8.- PROPOSED FENCE : 1.320 LONG FT.
- 9.- PROPOSED PLATFORM TO STABLES AND FEED ROOM : 19.552 SQ.FT.
- 10.- PROPOSED LANDSCAPE PLATFORM : 10.000 SQ.FT.

SW 15th AVENUE MIAMI FLORIDA

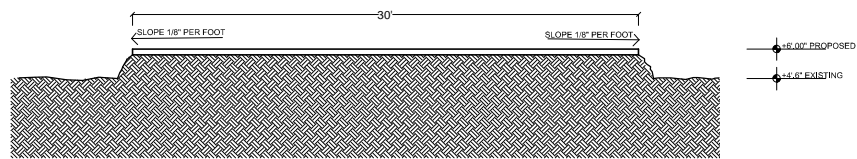
S-1

SHEET NUMBER

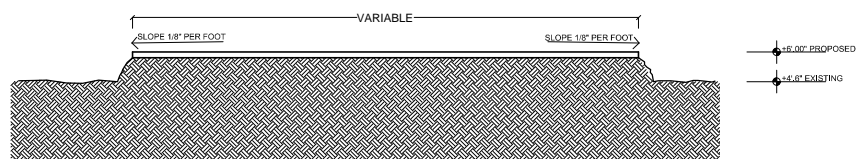
SECTION



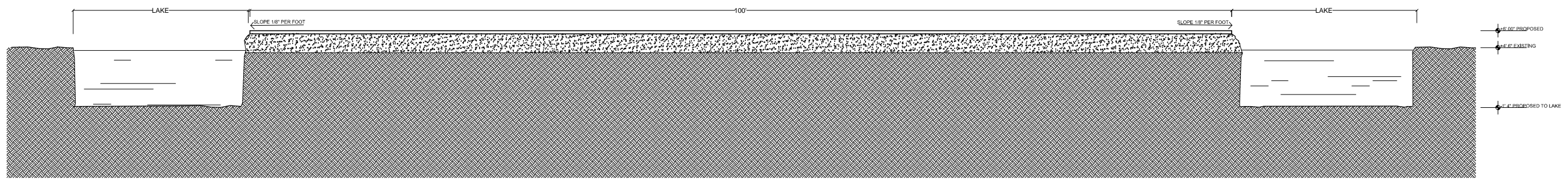
SECTION A
SCALE: N.T.C



SECTION B
SCALE: N.T.C



SECTION C
SCALE: N.T.C



SECTION D
SCALE: N.T.C

RESERVE THEIR COPYRIGHTS TO THE IDEAS AND DESIGN SHOWN. THESE DRAWINGS ARE TO BE USED FOR THE PROJECT STATED ONLY AND SHALL NOT BE USED OR REPRODUCED FOR ANY OTHER PURPOSE WITHOUT THE EXPRESSED WRITTEN CONSENT. CONTRACTORS SHALL VERIFY ALL DIMENSIONS AND SHALL NOT RELY ON SCALED DIMENSIONS. NOTIFY THE ENGINEER OF ANY DISCREPANCIES PRIOR TO COMMENCING WORK.

APPROVED BY	DATE

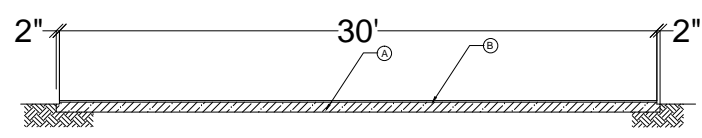
SW 157th AVENUE MIAMI FLORIDA

DETAIL

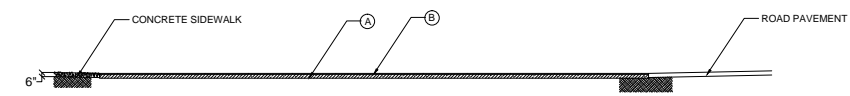
RESERVE THEIR COPYRIGHTS TO THE IDEAS AND DRAWINGS SHOWN. THESE DRAWINGS ARE TO BE USED FOR THE PROJECT STATED ONLY AND SHALL NOT BE USED OR REPRODUCED FOR ANY OTHER PURPOSE WITHOUT THE EXPRESSED WRITTEN CONSENT. CONTRACTORS SHALL VERIFY ALL DIMENSIONS AND SHALL NOT RELY ON SCALED DIMENSIONS. NOTIFY THE ENGINEER OF ANY DISCREPANCIES PRIOR TO COMMENCING WORK.

APPROVED BY	DATE

SW 157th AVENUE MIAMI FLORIDA

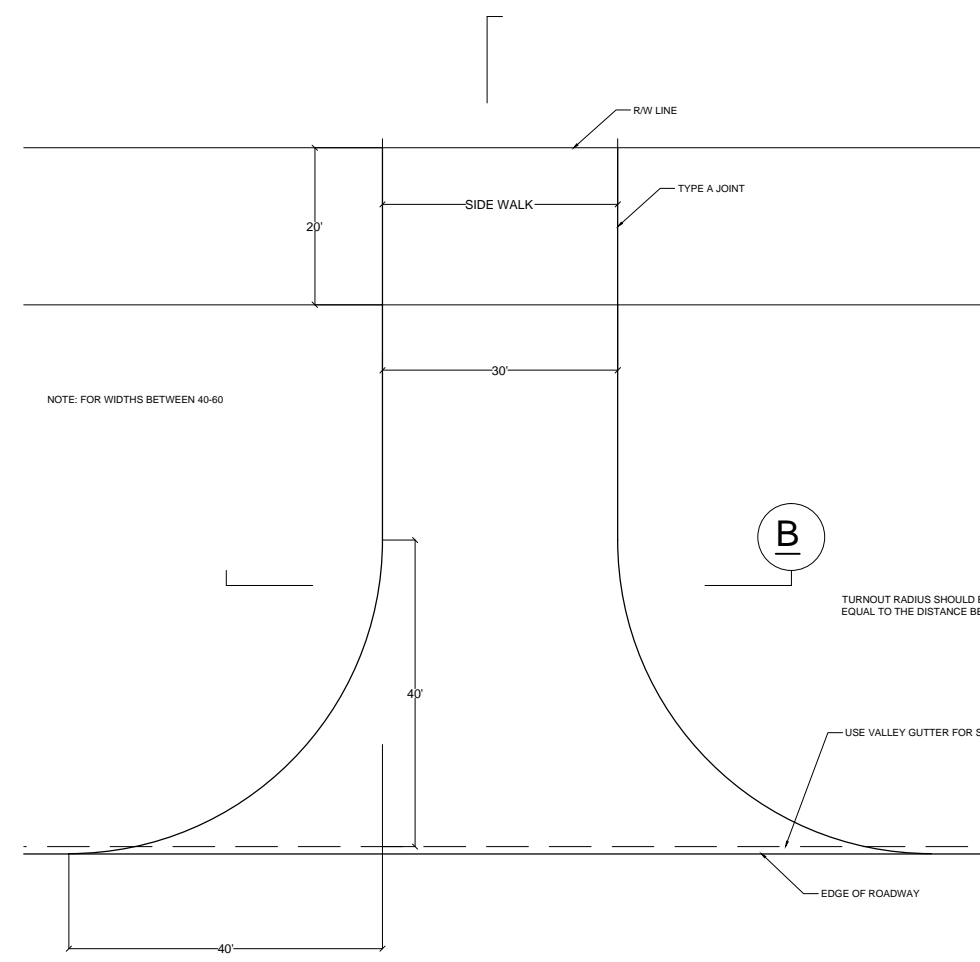


SECTION B
SCALE: N.T.C



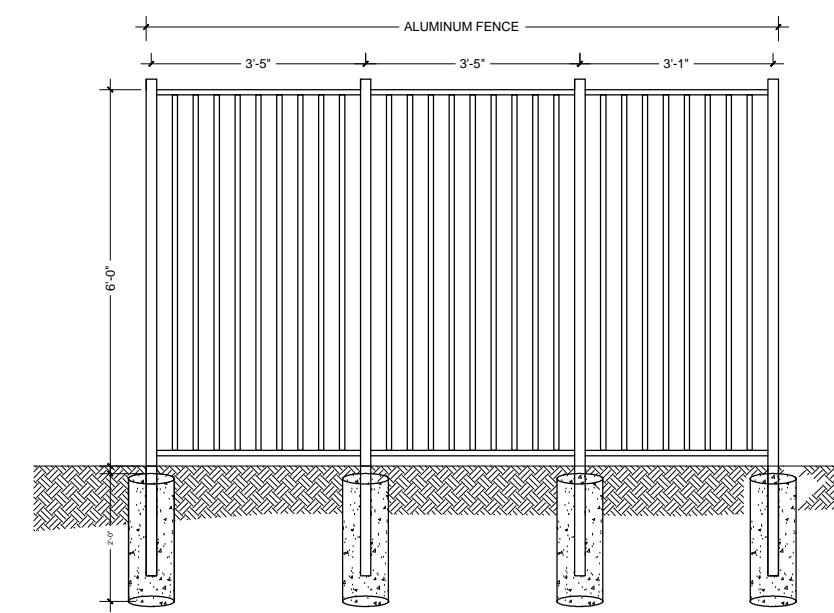
SECTION A
SCALE: N.T.C

- Ⓐ BASE 6" THICK
- Ⓑ ASPHALTIC CONCRETE SURFACE COURSE 1" THICK



PLAN
SCALE: N.T.C

SW 157TH AVENUE



FENCE DETAIL
SCALE: N.T.C